



Cold Milling Machines **1300 - 2000 DC range** Technical specifications

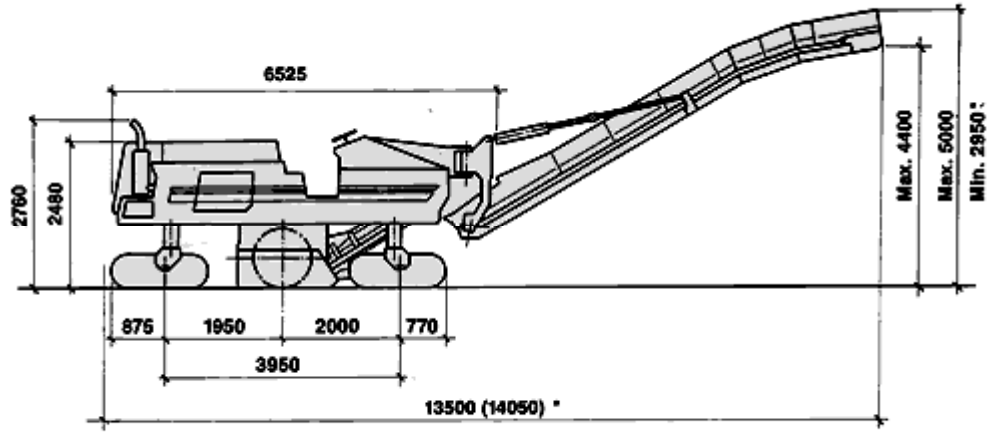
Base Course Management Pty Ltd

www.basecourse.com.au

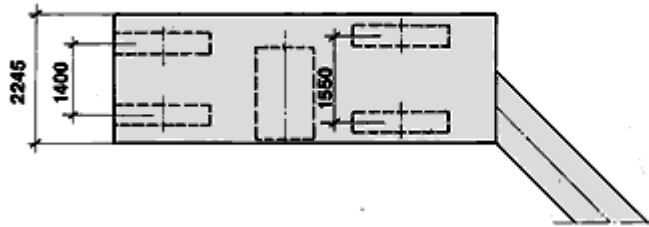
Technical specification

		2000 DC	1900 DC
Milling width max.	mm	2010	1905
Milling depth	mm	0-300	0-300
Milling drum			
Spacing	mm	15	15
Numbers of tools		154	154
Drum diameter with tools	mm	980	980
Drum inclination	degrees	5	5
Engine			
Make		Mercedes-Benz	Mercedes-Benz
Type		OM 442 LA	OM 442 LA
Cooling		Water	Water
No. of cylinders		8	8
Output	kW/HP/PS	297/1398/1404	297/398/1404
Engine speed	min-1	2100	2100
Displacement	cm ³	14620	14620
Fuel consumption: 1/1	l/h	73	73
Fuel consumption: 2/3	l/h	60	60
Speed /Gradeability			
Operating speed	m/min	0-31	0-31
Travel speed	km/h	0-4.5	0-4.5
Theor. gradeability (operating gear)	%	80	80
Theor. gradeability (travel gear)	%	80	80
Ground clearance	mm	235	235
Weights/Loads			
Front axle load	da N (kg)	13,350	13,300
Rear axle load	da N (kg)	9,750	9,700
Shipping weight	da N (kg)	23,100	23,000
Operating weight	da N (kg)	25,400	25,300
Track units			
Tracks, front	mm	1600 x 260 x 550	1600 x 260 x 550
Tracks, rear	mm	1600 x 260 x 550	1600 x 260 x 550
Tank capacities			
Fuel tank	l	850	850
Hydraulic oil tank	l	270	270
Water tank	l	1600	1600
Electrical system			
	v	24	24
Conveyor system			
Primary belt width	mm	800	800
Discharge belt width	mm	800	800
Belt capacity	m ³ /h	290	290
Shipping dimensions			
Machine L x W x H	mm	6650 x 2600 x 2850	6650 x 2500 x 2850
Conveyor L x W x H	mm	8000 x 1150 x 1500	8000 x 1150 x 1500

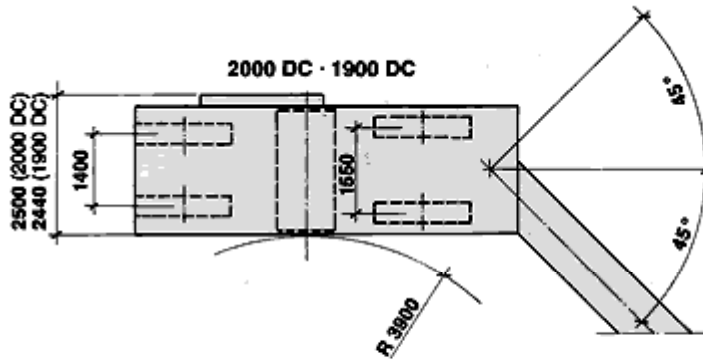
Dimensions in mm



1500 DC · 1300 DC



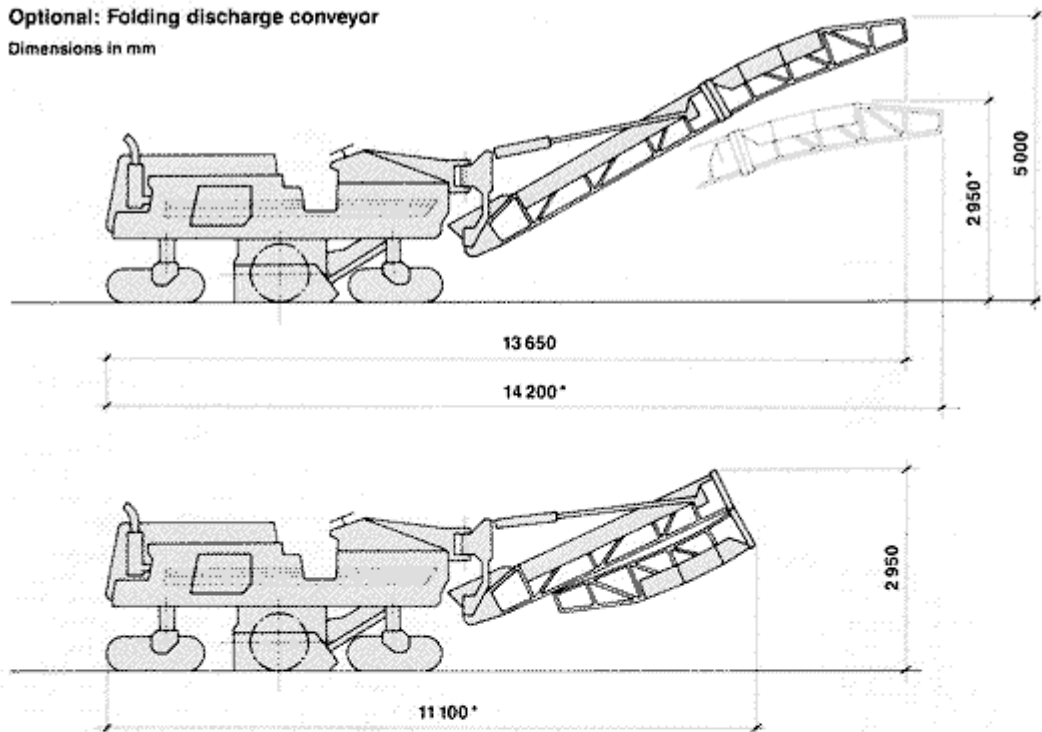
2000 DC · 1900 DC



* = Low-loader transportation dimensions

Optional: Folding discharge conveyor

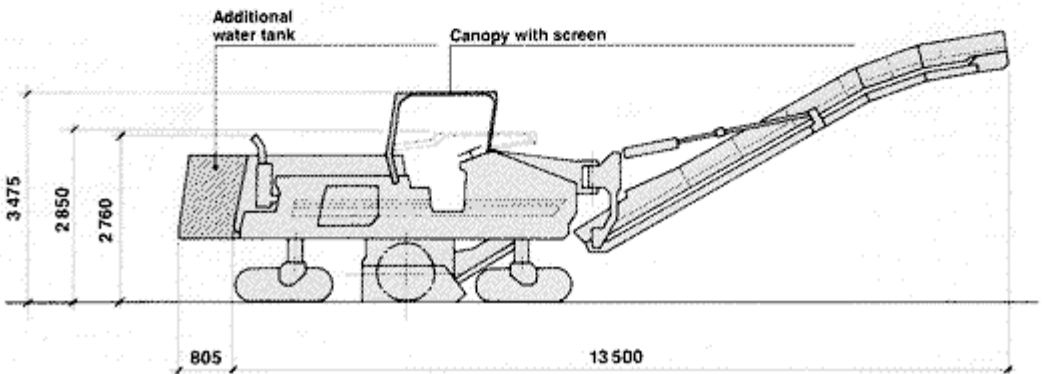
Dimensions in mm



* = Low-loader transportation dimensions

Optional: Additional water tank and canopy with screen

Dimensions in mm



Basic design

Cold milling machine with mechanically driven milling drum and two-piece front loading conveyor system.

Chassis

Light-weight torque tube chassis frame in heavy duty steel plate has maximum strength and resistance to distortion under load and all types of ground conditions.

Track suspension

All four track units are mounted on hydraulically operated telescopic guides which can be individually adjusted in height. Milling depth is set by adjusting the two front telescopic guides. The two rear telescopic guides are used for increasing the machine's ground clearance from operating position to travel position. The tracks are equipped as standard with polyurethane pads.

Steering

The machine is equipped with a fingerlight hydraulic four-track dual steering system for superb tight manoeuvrability and crab steering capability.

Track drive system

All four tracks are individually driven by independent hydraulic motors which are fed by a common hydraulic variable displacement pump. Speeds in milling gear and travel gear are infinitely variable from zero to maximum speed. An automatic hydraulic differential lock in milling gear ensures equal traction of all four tracks. All speed adjustments can be carried out on both sides of the operator's control station.

Performance regulator

The fully automatic performance regulator matches the milling speed to milling conditions from the load on the engine. This automatic function ensures maximum production at all times without overloading the machine. The automatic performance regulator can be overridden for manual operation.

Brakes

Braking is achieved by drag from the hydrostatic transmission. Hydraulic disc parking emergency brakes are fitted to the rear tracks. Fail-safe system. When pressure drops, brakes are applied automatically.

Milling drum

The drum operates in an up-milling direction. Weld-on toolholders are fitted

as standard equipment for simple, fast replacement. The toolholders have locator pins so that they can be quickly and accurately welded to the drum without the need for a jig. A variety of snap-in point-attack cutting tools for different pavement materials from the softest asphalt to the hardest concrete can be used. Special edge flighting ensure a clean sharp cut at the edges. The bolt-on material ejector paddles ensure that the milled material is efficiently transferred from the drum to the primary conveyor belt.

Exchanging cutting tools

The combined moldboard and drum door can be raised and lowered hydraulically in seconds to facilitate excellent access to the milling drum and cutting tools.

Direct mechanical drum drive

Power is transmitted from the engine through a clutch and power bands to the cutting drum reduction gear for maximum milling efficiency. An automatic hydraulic tensioner ensures that the power bands under correct tension at all times.

Milling depth control

The milling machine is equipped with an extremely precise automatic grade control system to control the milling depth. Reference is sensed from the milling drum side plates. The grade control system maintains the pre-selected depth by constantly monitoring and correcting the position of the depth adjustment cylinders on the rear tracks. Milling depth can be monitored by the operator from the control station and the ground for easy operation. A manual override to the automatic grade control is standard. Optional slope control simply plugs in to standard sockets.

Water spray system

The milling drum housing has a pressurized water spray system which suppresses dust and cools cutting tools for longer life. Spray nozzles are easily removed for cleaning.

Soundproofing

Soundproofing is fitted as standard equipment. This protects the general public and the operator from excessive noise.

Operator's station

The central walk-through operator's station is very spacious and is fitted with one seat. It offers excellent visibility to the front of the machine for the conveyor

system and drum side clearance right and left. No need to look behind as with rear loaders. The operator's console has been designed for simple operation with dual controls right and left. A slide-up, lockable cover is provided for the console to prevent vandalism. Fold-away ladders right and left are standard equipment.

Instrumentation

Hour counter, tachometer, engine temperature gauge, battery charging indicator, pressure gauges for system control pressure, conveyor pressure and track drive pressure, filter contamination warning lights.

Hydraulic system

Independent hydraulic systems for advance drive, conveyors, cooler fan, water sprinkler unit and control functions. The hydrostatic pumps are driven by the combustion engine via a splitter gearbox. Filtration is carried out by return flow and feed pressure filters, and by pressure filters for all control functions.

Front loading conveyor system

The dual conveyor system consists of a 800 mm wide primary conveyor and the discharge conveyor for loading trucks. Both conveyors have infinitely variable speed control. They have ribbed and troughed belts for maximum conveying capacity. The conveyors are fitted with quick removable covers as standard equipment which prevent spillage and dust during windy conditions. The discharge conveyor is adjustable in height for different truck box heights and has a 90° swing capability for side loading trucks and windrowing. Truck bumpers prevent conveyor damage by trucks.

Electrical system

24-volt system with 3-phase alternator and two 12-volt batteries. Starter, electric power take-off socket, horn and complete lighting package with spotlights, ideal for night working operations.

Tank filling systems

Water can be filled via a standard C-type fitting from the ground or a large filling port from the operator's station. Diesel fuel is filled via a standard threaded port or large filling port from the operator's station.

Safety features for transportation

The machine is equipped with sturdy loading eyes for loading with a crane or for securing to a low-bed trailer.

Specification

0 Standard • Optional

Specification	2000 DC	1900 DC	1500 DC	1300 DC
Working lights (removable)	0	0	0	0
Warning light	0	0	0	0
Tool kit		0	0	0
Loading and lashing eyes	0	0	0	0
Soundproofing	0	0	0	0
Walk-through operator's station	0	0	0	0
4-track dual steering	0	0	0	0
Conveyor	0	0	0	0
Automatic grade control	0	0	0	0
Reserving alarm	0	0	0	0
German Safety Council approved (GS)	0	0	0	0
Comprehensive safety package with 5 engine kill switches	0	0	0	0
Engine output 296 kW	0	0	0	0
Conveyor belt width 800 mm	0	0	0	0
Folding discharge conveyor	•	•	•	•
Adjustable discharge conveyor belt speed	•	•	•	•
Hydraulically lifting primary conveyor	•	•	•	•
Device for neutralizing hydraulic track drive for towing	•	•	•	•
Fast-change bolt-on toolholder system	•	•	•	•
Air compressor	•	•	•	•
Pneumatic air tool for quick tool change	•	•	•	•
Operator station canopy with screen	•	•	•	•
Hydraulic side plate lifters	•	•	•	•
Additional valve to lock scraper blade	•	•	•	•
High pressure wash-down system	•	•	•	•
Equalizing system for longitudinal levelling	•	•	•	•
Slope control	•	•	•	•
Additional rear water filling pipe	•	•	•	•
Additional water tank (1000 l)	•	•	•	•
Wire-rope sensor	•	•	•	•
Pump for water refilling - petrol	•	•	•	•
Pump for water refilling - hydraulic	•	•	•	•
Pump for diesel refilling	•	•	•	•
Special painting	•	•	•	•
Conveyor support legs for low-loader transport	•	•	•	•
Exchangeable milling drum with 2010 mm working width	0	•	-	-
Exchangeable milling drum with 1905 mm working width	•	0	-	-
Exchangeable milling drum with 1500 mm working width	•	•	0	-
Exchangeable milling drum with 1320 mm working width	•	•	-	0
Exchangeable milling drum with 1000 mm working width	•	•	•	•

The Tradition Goes On

Base Course Management Pty Ltd was formed in February 1996, with its principal activity being the contracting and maintenance of specialised road surfacing equipment. Since formation, **Base Course Management Pty Ltd** has expanded its scope of activities to include profiling machinery, road construction and maintenance equipment, full service road works and project management.

In January 2002, **Base Course Management Pty Ltd** underwent a major re-organisation of its business activities with contracting of profilers becoming its key objective and company focus.

As always, **Base Course Management Pty Ltd** recognises service and quality as two of the keys to successful business. The services offered by its profiling and full service operating personnel are fully guaranteed and warranted. The profiling machinery supplied by **Base Course Management Pty Ltd** is the most reliable and technologically advanced in the market today with new and innovative profilers being continually evaluated and introduced into Australia.

The worldwide network available via **base Course Management Pty Ltd** enables the customer to be continuously updated with the latest developments in profiling machinery and associated equipment.

Successful business also requires a good management team. A team which knows its customer needs and satisfies those needs with the most efficient and cost effective solutions. The team at **Base Course Management Pty Ltd** has a combined total of over 50 years of knowledge and experience in contracting, maintenance, road rehabilitation and service in the road construction and maintenance industry:

- **Steve Gawley** : General Manager - Civil Engineer with business management expertise acquired over 25 years in the asphalt, bitumen and road construction industry.
- **Steve Berry** : NSW Operations Manager - profiling and contracting management expertise acquired over 12 years in the construction and road maintenance areas.
- **Paul Montgomery** : QLD Operations Manager - has been associated with the asphalt industry for over 12 years in both mechanical and supervision roles.
- **Steve Cutler** : NSW Operations Co-Ordinator -5 years in both practical and contract operations with a clear focus on customer service and satisfaction.

Remember, Base Course Management Pty Ltd is the 'One Stop Shop' for all road maintenance construction and rehabilitation profiling machinery to meet your requirements.

Base Course Management

Phone	NSW 02 9627 6900	QLD 07 3865 5830
Fax:	029627 6966	073865 5832

Visit us at: www.basecourse.com.au